

Clearly the Best

FLEXIBLE
“SEE-THRU”
SWING DOORS



M.T.I. "See-Thru" SWING DOORS

M.T.I. Flexible See-Thru Doors are ideal for all Industrial and Commercial applications including Factories, Food Processing Plants, Transport Terminals, Retail Stores, Supermarkets, Cool Stores, Meat Works, Hospitals etc.

Manufactured in Australia under licence to Sigerist of Switzerland they offer the most advanced features of any flexible door on the market today. Constructed from tough resilient PVC and a drawn steel frame, they have proven to be the ideal answer for functional style dividers.

See-Thru Doors have the advantage of opening with a light push of the hand trolley, forklift truck or transport vehicle and automatically close after entry.

Despite their great flexibility, they keep out draughts and dust, are noiseless in operation and act as a barrier between areas of different temperatures. Being completely clear, they give an unrestricted view of oncoming traffic and, if required, will remain open in the 90° position.

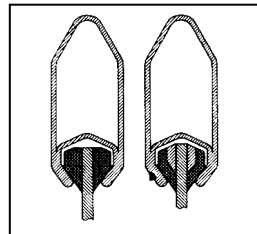
ADVANCED FEATURES INCORPORATED IN M.T.I. SEE-THRU DOORS

M.T.I. Flexible See-Thru Swing Door Frames are fully weld construction (No rivets or bolts are used in the manufacture of frame). Approx. 100 mm overlap of panels and unique free-hanging method of framing PVC ensures a perfect seal under all conditions. No buckling, no tearing, no uneven hanging.

Standard finish of all door frames in zinc chromate base, hammertone grey enamel. Optional finish: hot dipped galvanised frames, for cool rooms, freezer rooms and food preparation areas. Powder coating is available on request.



With patented self-closing ball hinges M.T.I. Flexible See-Thru Doors are adjustable over a wide range of closing pressures. The lower frames are protected against accidental collision by minimum point of fracture shear pin. Doors will remain open in 90° position if required and will close positively under a light push.

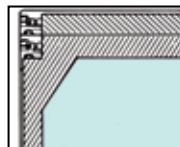


Cross sections illustrate the free-hanging method of holding the clear door panels.

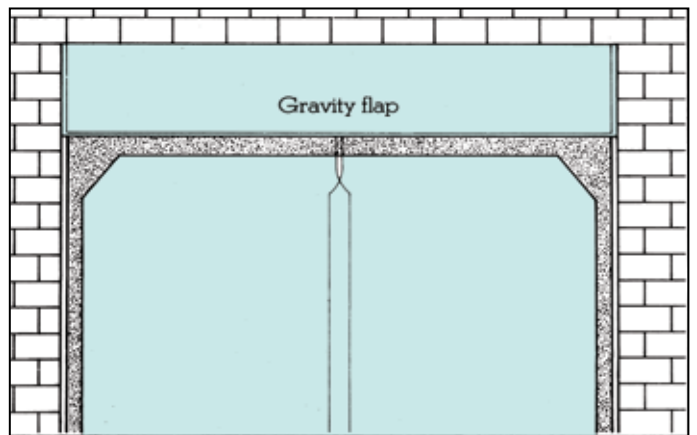
Drawn steel profile frame provides the means of firmly holding extruded sections which are bonded to PVC panel vertically and horizontally.

FOR LARGER THAN STANDARD DOOR OPENINGS

For door openings where the height exceeds 3600mm (max. height of heavy duty doors) a see-thru gravity flap can be installed above the swing doors to provide a more economical opening. Where the width of the door opening exceeds 3000 mm a tandem heavy duty type swing door is required.



Tandem Head section consisting of Double Head and hinge to support weight of larger doors.



Warranty:

M.T.I. Flexible "See Thru" Swing Doors are warranted to be free of any defects in workmanship and materials under normal use in service for a period of twelve (12) months.

SWING DOOR SELECTION GUIDE

Type	Application	Maximum Size	Door Panels
Medium Duty	Pedestrian and Non-Motorised	3600mm H x 3050mm W	5mm thick
Medium Duty	Pedestrian Traffic Only	2900mm H x 2400mm W	5mm thick
Heavy Duty	Industrial and Fork Lift Truck	3660mm H x 3050mm W	7mm thick
Heavy Duty (Tandem Head)		4200mm H x 3600mm W	7mm thick

Note: Single doors are available in both medium and heavy duty types.



MELBOURNE

55 Northern Road,
West Heidelberg, Vic. 3081
Telephone: (03) 9450 1900
Fax: (03) 9458 3217

SYDNEY

5 Hallstrom Place,
Wetherill Park, N.S.W. 2164
Telephone: (02) 9756 5577
Fax: (02) 9756 5666

Distributed by:



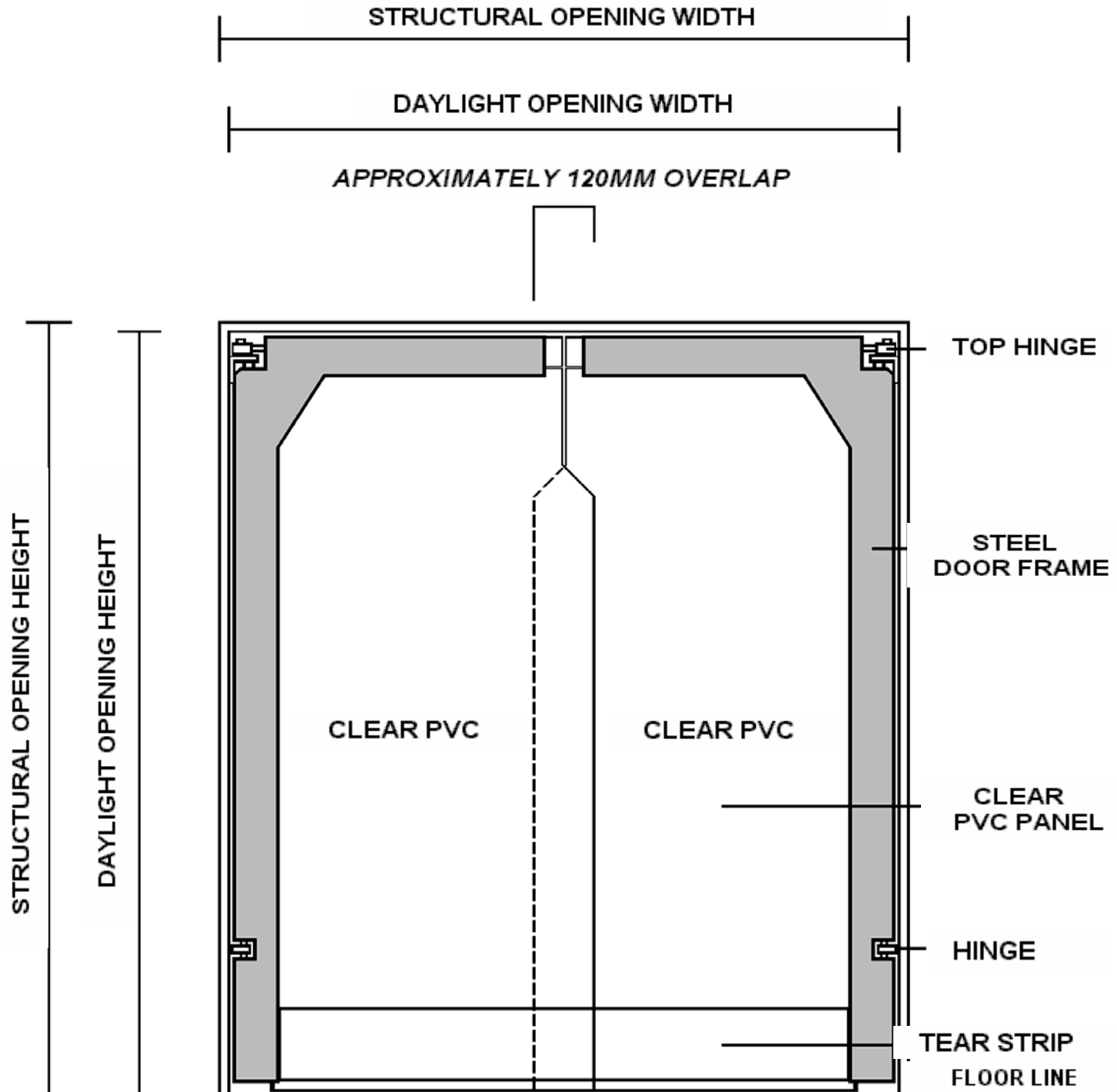
M.T.I. QUALOS PTY. LTD.

ABN 12 414 244 204

55 Northern Road, WEST HEIDELBERG, VIC. 3081. AUSTRALIA.
P.O. Box 5055, WEST HEIDELBERG M.D.C. VIC. 3081. AUSTRALIA.
Telephone: +61 (03) 9450 1900 Facsimile: +61 (03) 9458 3217
Email: sales@mtiqualos.com.au Website: www.mtiqualos.com.au



M.T.I. FLEXIBLE "SEE-THRU" SWING DOORS





M.T.I. QUALOS PTY. LTD.

ABN 12 414 244 204

55 Northern Road, WEST HEIDELBERG, VIC. 3081. AUSTRALIA.
P.O. Box 5055, WEST HEIDELBERG M.D.C. VIC. 3081. AUSTRALIA.
Telephone: +61 (03) 9450 1900 Facsimile: +61 (03) 9458 3217
Email: sales@mtiqualos.com.au Website: www.mtiqualos.com.au



ARCHITECTURAL SPECIFICATIONS OF M.T.I. FLEXIBLE “SEE-THRU” DOORS

SWING DOORS

Supply and install one (1) pair of Flexible “See-Thru” Swing Doors as manufactured by M.T.I. Qualos Pty. Ltd., 55 Northern Road, West Heidelberg, Victoria, 3081., and 5 Hallstrom Place, Wetherill Park, New South Wales, 2164., to suit existing opening, or opening provided by builder mm High x mm Wide.

- (1) DOORS CONSTRUCTED OF **MEDIUM DUTY** SEAMLESS DRAWN STEEL PROFILE FRAMES WITH 5MM THICK CLEAR PVC PANELS WITH 100MM OVERLAP TO CENTRE.

**** OR ****

- (2) DOORS CONSTRUCTED OF **HEAVY DUTY** SEAMLESS DRAWN STEEL PROFILE FRAMES WITH 7MM THICK CLEAR PVC PANELS WITH 100MM OVERLAP TO CENTRE.

Patented ball hinges, self-closing and fully adjustable with minimum point of fracture hinges to bottom, (extra centre hinges to doors over 3000mm High x 2800mm Wide)

FINISH

- (A) Standard zinc chromate base, hammertone grey enamel
Optional finish to PVC panels opaque (frosted)
- (B) Coolrooms and Freezers – Hot dipped galvanised frames
- (C) Powder coated frames available upon request

NOTE: LOWER HINGE.

Align doors square to opening. Adjust thrust bearing so that it carries the weight of the door, then lock into place with lock nut.

Full height mounting plate fixing holes are to be pre-drilled to suit opening. Doors are then to be installed following step (1) on installation instructions sheet.

